

XO[®] 4

RETROFITTING CAS 1 COMBI-SEPARATOR

YB-915
Version 1.20

XO CARE A/S
Usserød Mølle
Håndværkersvinget 6
DK 2970 Hørsholm
Denmark

+45 70 20 55 11
info@xo-care.com
www.xo-care.com

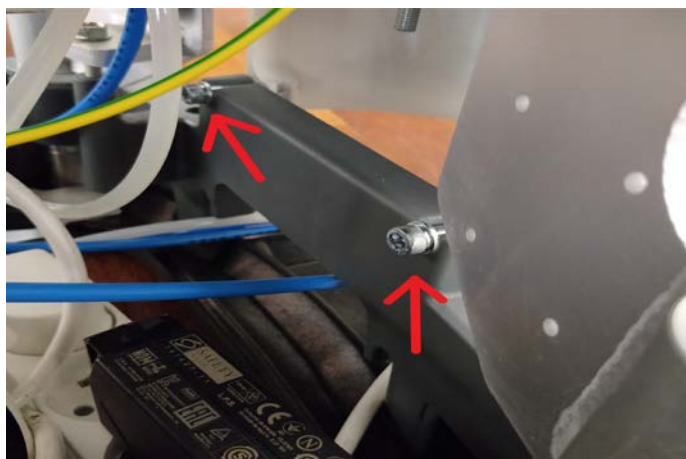


Approx. 25 cable ties
Torx 25 screwdriver
Torx 20 screwdriver
Flathead screwdriver
Nipper
Allen Key size 5
2 x Wrench size 10
ESD wrist band



A close-up photograph of the underside of a metal enclosure. A red arrow points to a small metal component, likely a ground connection point. The enclosure is made of metal and has various wires and components attached to its underside. A green terminal block is visible, with a blue wire connected to it. There are also some black wires and a small metal component with a red arrow pointing to it. The background is a plain, light-colored surface.

Loosen the 2 bolts holding the rear half-pipe panel at the bottom.



Remove the rear half-pipe panel to access the mounting bracket for the power supply.



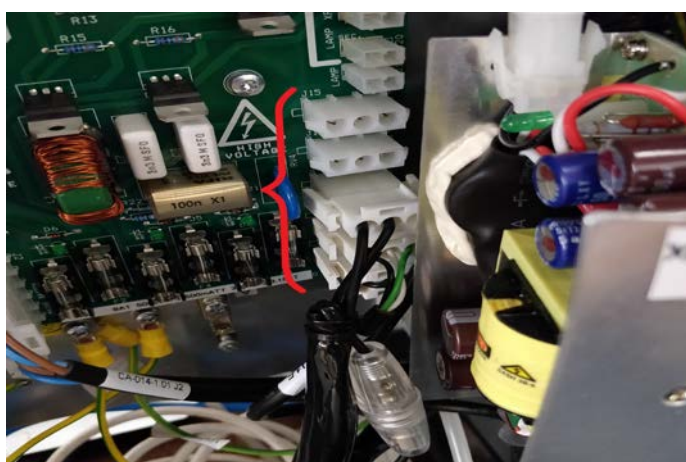
Place the power supply for the separator on top of the unit power supply with an insulating disc between. Note the cables go on the left side of the chassis.



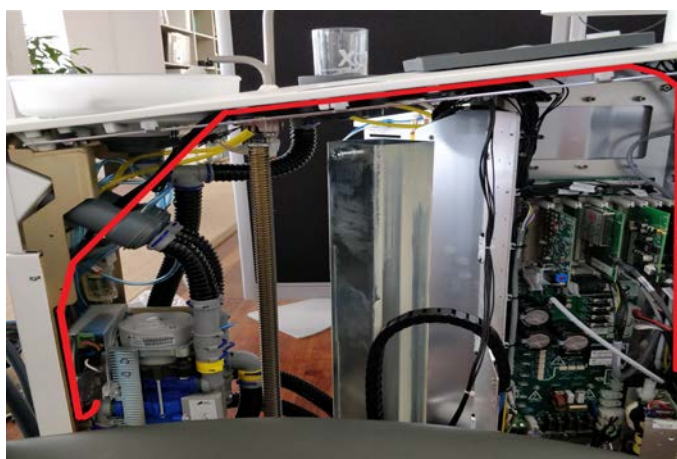
Install the rear half-pipe panel on the unit.



Connect the power supply to connector J11-J15



Route the power supply cable for the separator to the separator.

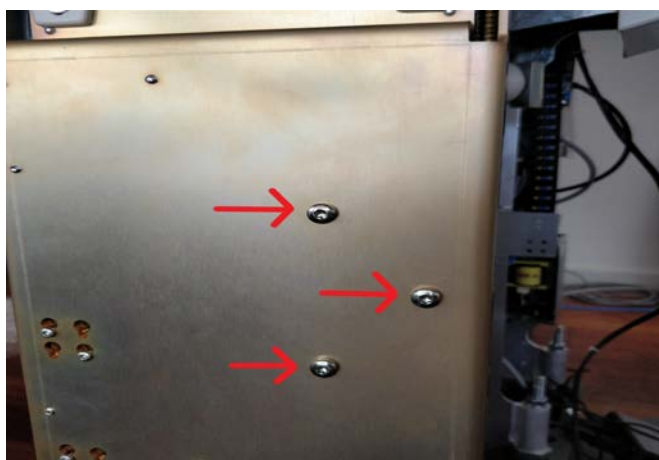


Remove the 4 bolts holding the front panel and remove the panel.

Note: make sure to notice the placement of any spacers/washers used to align the front panel.



Bolt the separator to the front chassis using the supplied bolts.



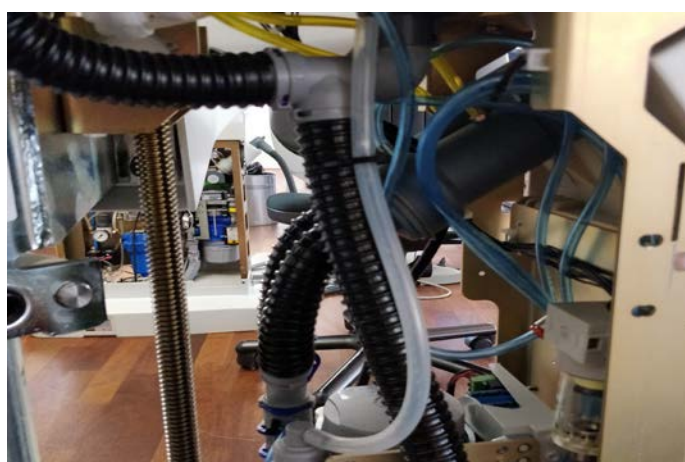
Connect the hoses to select vac.



Connect drain hose to the fountain.



Place the transparent ventilation hose along with the drain hose and secure it with a cable tie.

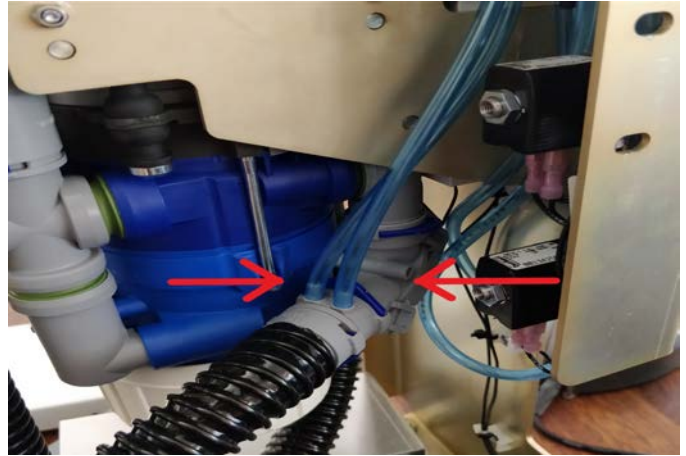


Connect the oil collector drain hose to the fitting found on the tube to select vac.



Connect the vacuum hoses for the valves for select vac.

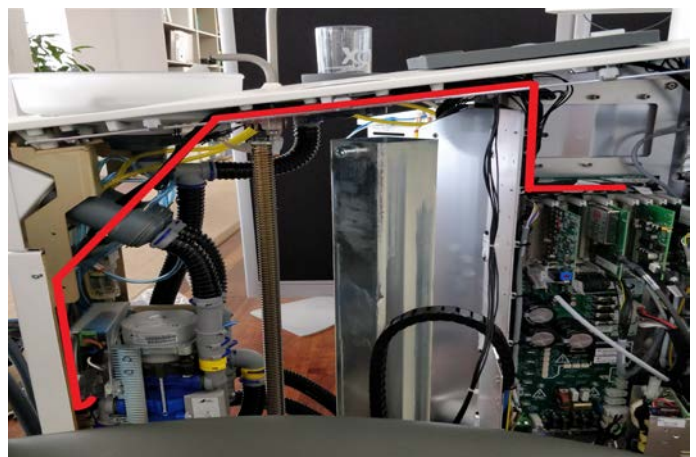
IMPORTANT: The connectors **MUST** point upwards to prevent water from travelling to the valves.



Connect the power supply cable to the separator.



Route the 2-pin signal cable CA-035 to the backplane PCB.



Connect the 2-pin signal cable CA-035 to connector J8.



Route the 6-pin signal cable CA-041 from the separator to the remote-control panel on the service door.



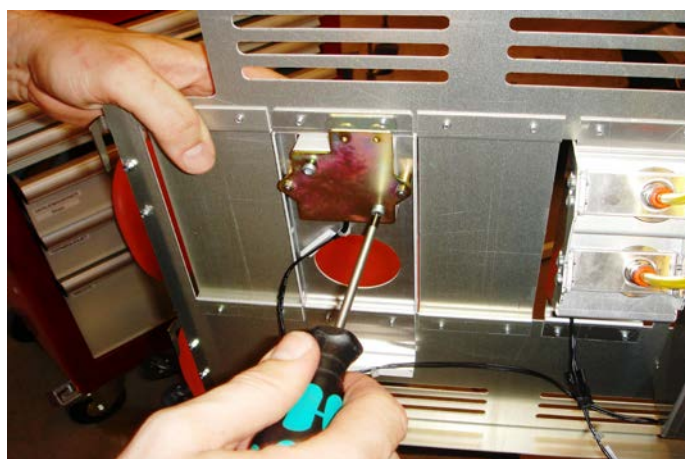
Install the remote-control panel on the service door in 3rd position from the left.



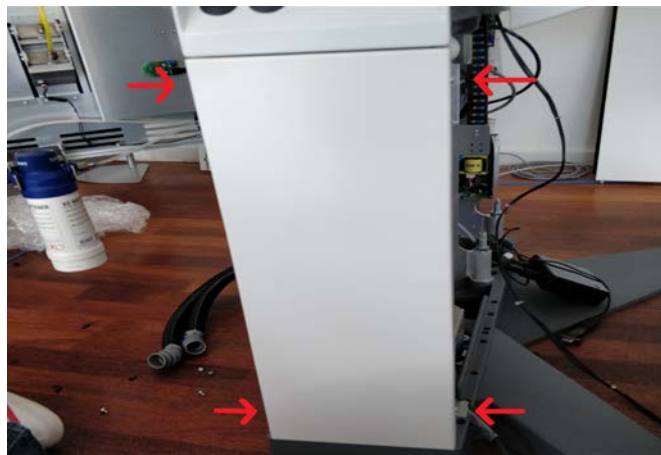
Remove the remote-control pad and connect the cable.



Install the remote-control pad and tie down the cables with cable-ties.



Install the front panel using the 4 bolts and make sure to align the panel by placing spacers/washers the same way as before.



Panels aligned!



Check the functionality of the separator before mounting the side panels on the unit.