

XO[®] 4

UPGRADE SPITTOON VALVE MK3

YB-397
Version 1.00

XO CARE A/S
Usserød Mølle
Håndværkersvinget 6
DK 2970 Hørsholm
Denmark

+45 70 20 55 11
info@xo-care.com
www.xo-care.com



WARNING:

When making changes and handling electronics in the XO 4 Unit – always use ESD antistatic wristband (UC-600).

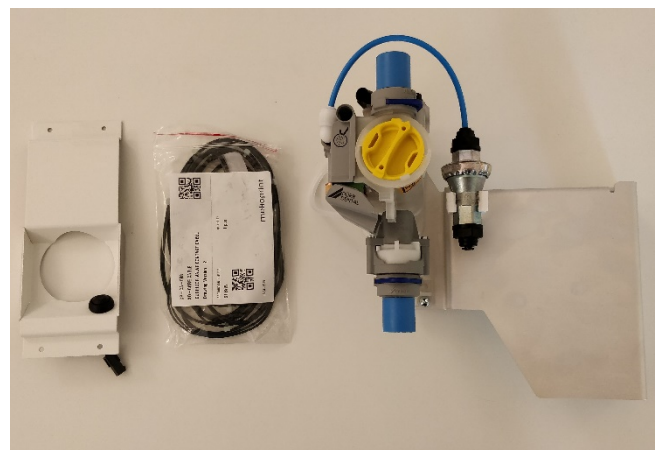


Tools:

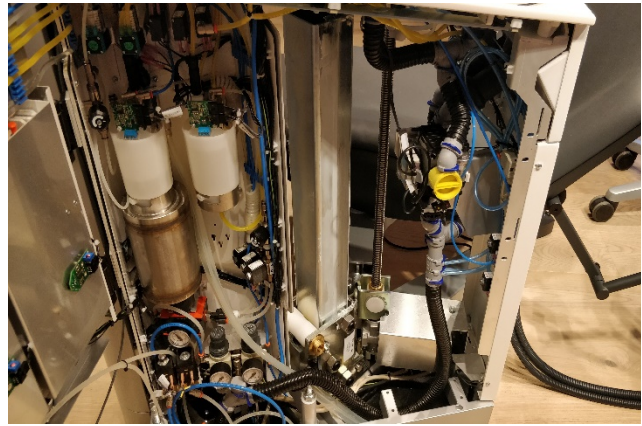
Torx 25 screwdriver
Torx 20 screwdriver
Flathead screwdriver
Nipper



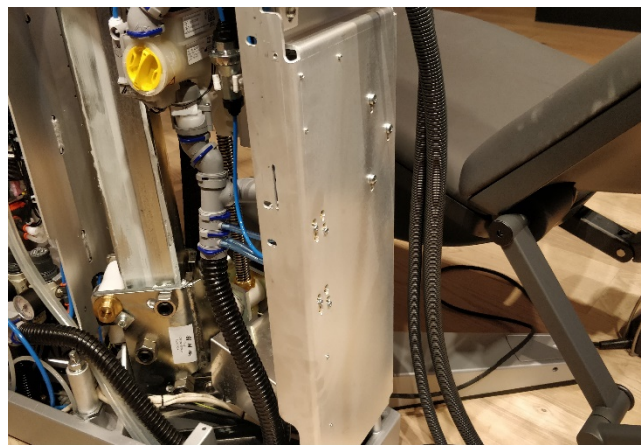
The complete kit.
KT-077



Switch on unit and empty the spittoon valve for water by activating the flush function on the button on the service panel or empty manually by opening the yellow filter.



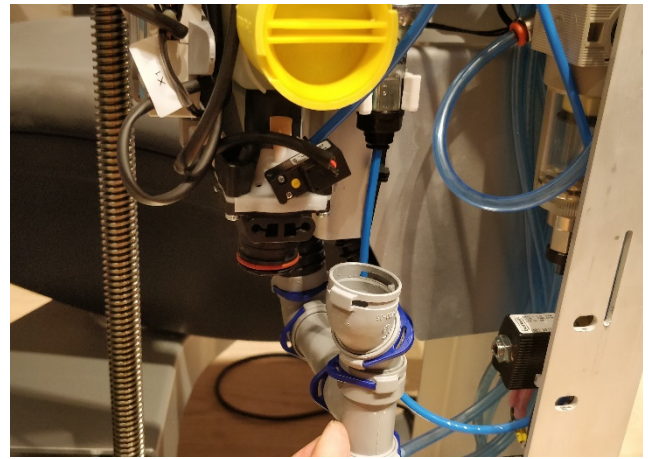
Remove the front panel (4 torx 20 screws).
Be aware of any adjustment washers between the panel and the front chassis. Any adjustment washers must be placed at the same position afterwards to ensure proper fitment of the panels.



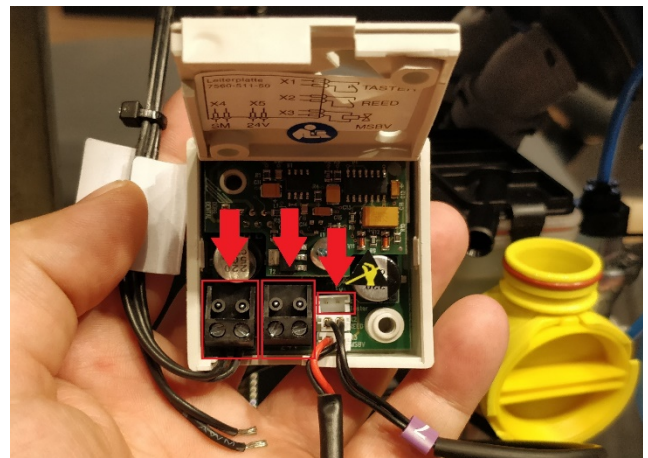
Remove the drain hose from the spittoon connected to the spittoon valve yellow filter.-397



Remove the suction hose connected to the bottom of the spittoon valve.



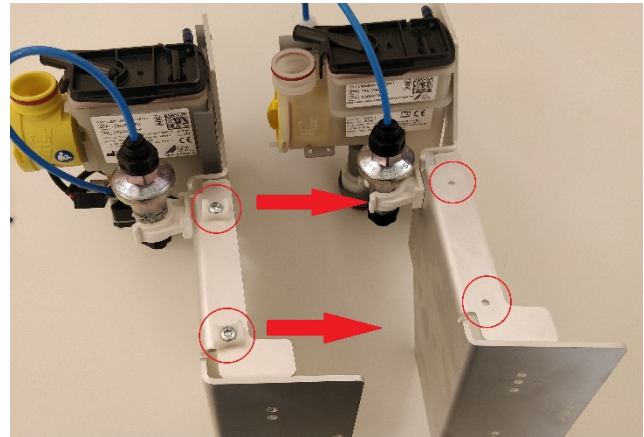
Remove the wires CA-027, CA-028 and CA-098 connected to the panel on the side of the spittoon valve.



Unscrew the 3 screws holding the spittoon valve and remove the spittoon valve from the unit.



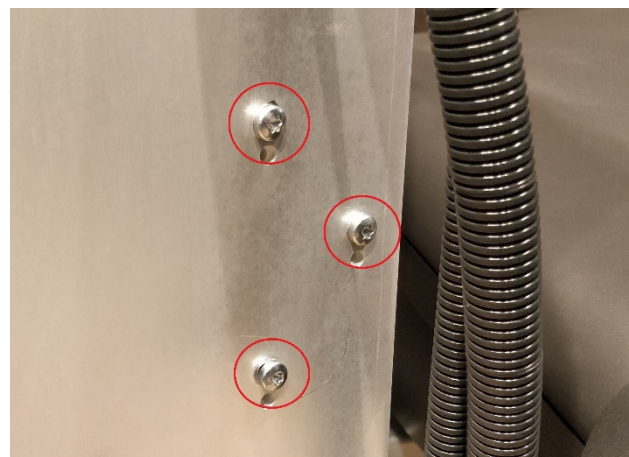
Remove the 2 cable tie holders from the old spittoon valve and mount them on the new spittoon valve.



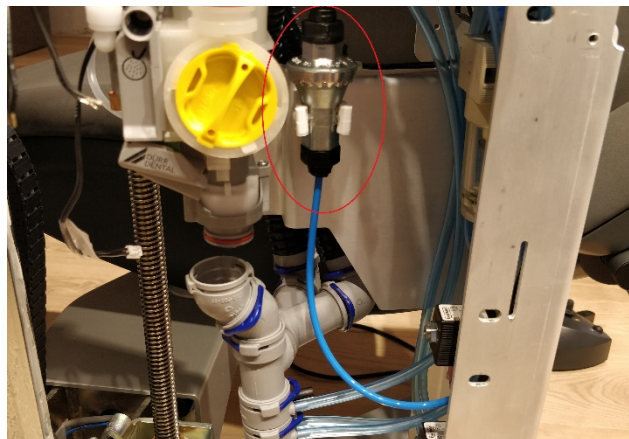
Mount the new spittoon valve in the unit as illustrated.
The middle holes in the bracket for the spittoon valve must be used.



The top holes in the front chassis must be used.

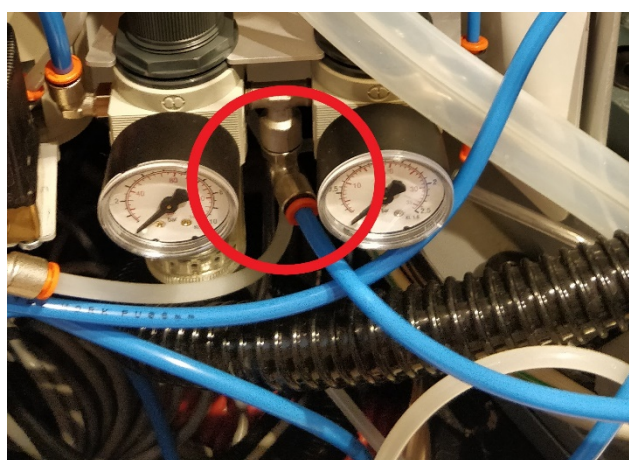


For units that already had the 4 bar air regulator on the spittoon valve bracket: Connect the 4mm hose to the air regulator and proceed to page 9.

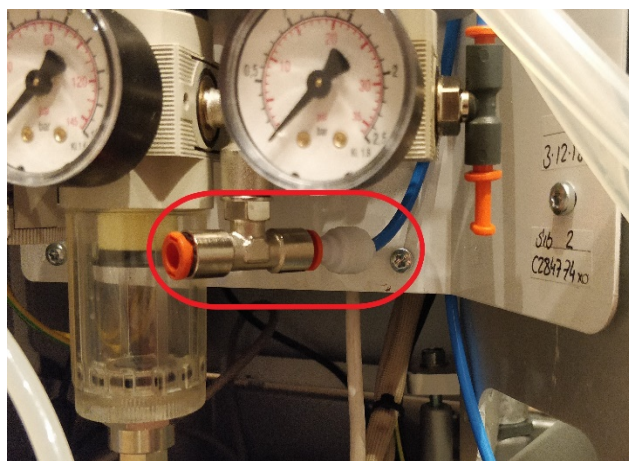


For units that did not have the 4 bar air regulator:

Replace the fitting displayed in the picture with the T-fitting supplied with the kit.



Connect the 6-4 mm reduction fitting to the T-fitting.



Remove the old 4mm hose for air supply to the spittoon valve.

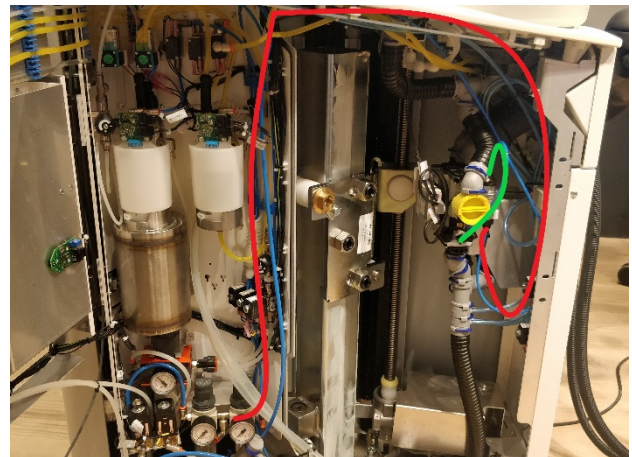
If the unit has backflow prevention tank, the 4mm air hose for the spittoon will be connected to a T-fitting, please seal off one of the outlets of the t-fitting with the supplied 4mm plug.

If the unit has quick connection for air on the service hatch, you will need to remove the T-fitting completely from the 2.5 bar air pressure line and use it on the 5.5 bar air pressure line instead.

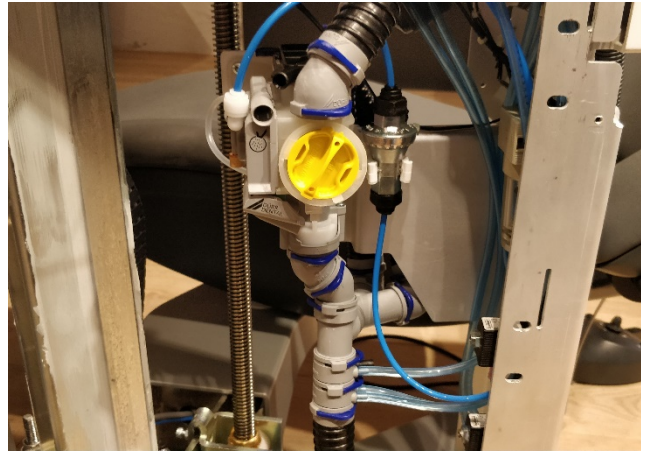


Route 150cm blue 4mm air hose as illustrated in **red**.
The 4mm hose connects the 5.5 bar manometer outlet to the 4-bar reduction valve inlet.

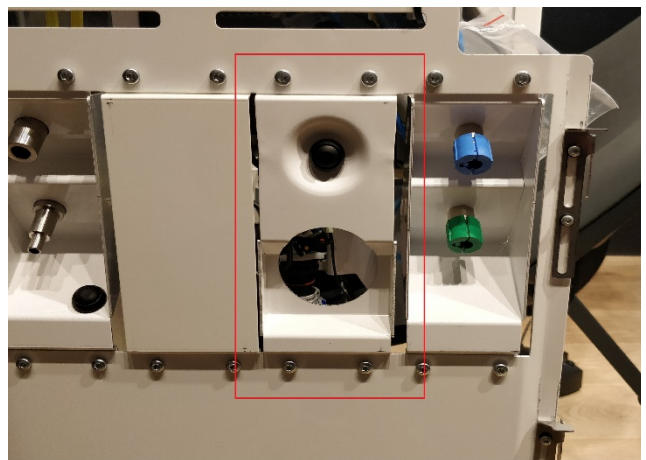
Route 25cm blue 4mm air hose as illustrated in **green**.
The 4mm hose connects the 4-bar reduction valve outlet to the spittoon valve air supply inlet.



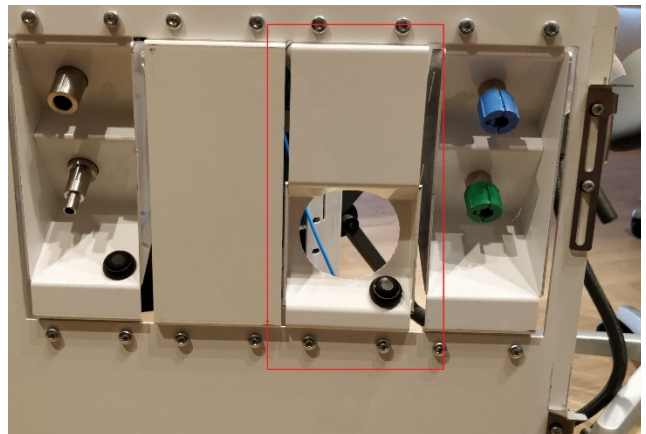
Connect the drain and suction hose on top and bottom of the spittoon valve.



Remove the spittoon valve panel in the service hatch.

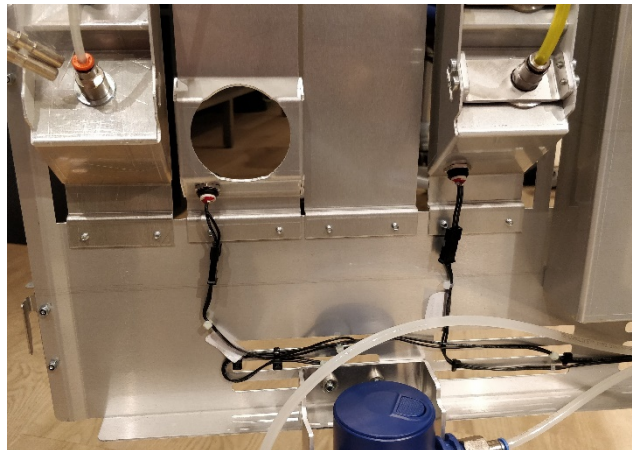


Fit the new spittoon valve panel in the service hatch.

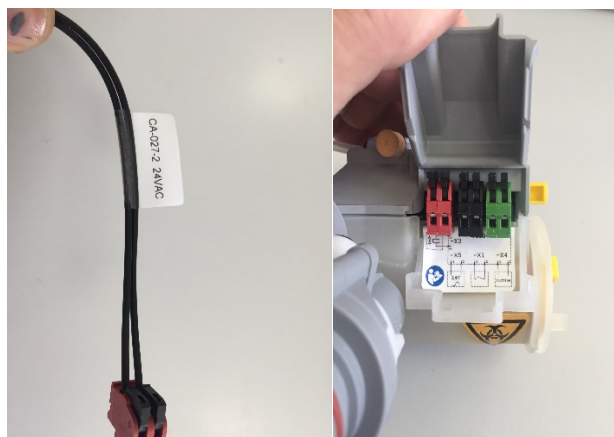


Units manufactured before 1/10-2016: Remove the cable CA-040 (connects the panel on the service hatch to connector X1 on the spittoon valve) and route the supplied cable CA-098 instead.

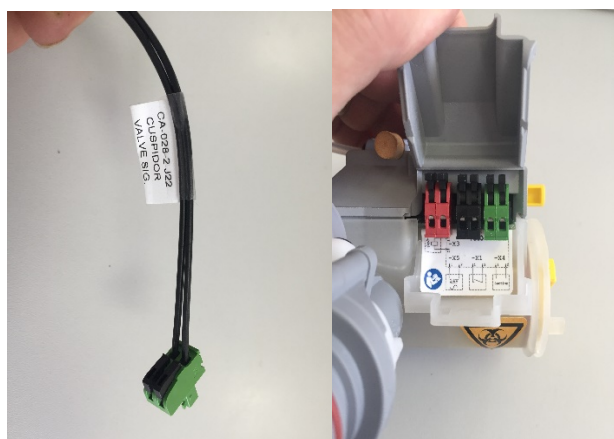
Units manufactured after 1/10-2016: Connect the cable CA-098 to the panel in the service hatch.



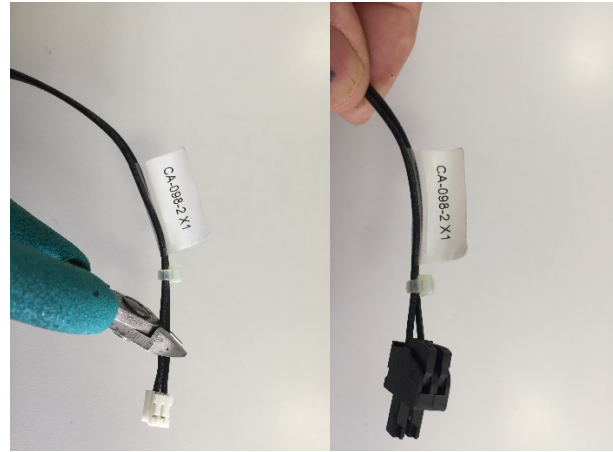
Connect the cable CA-027 to the red connector on the spittoon valve.



Connect the cable CA-028 to the green connector on the spittoon valve.



Cut the white connector off cable CA-098 and connect it to the black connector on the spittoon valve.



Refit the front panel on the unit. Remember to position any adjustment washers in the same location as they were before.



Switch on the unit and test that the spittoon valve is functioning properly.