

XO[®]

PATIENT CHAIR CARRIAGE ADJUSTMENT



YB-782
Version 1.1

1 INTRODUCTION

The chair carriage adjustments can't be done correctly with the chair on, it is too heavy. But it can also not be done without some sort of load on the chair carriage. It is best to use a lighter “dummy chair” that resembles the **weight distribution** of a chair. The “dummy” weight load must be attached to the chair carriage and the load must be positioned above or in front of the supporting leg to imitate the weight distribution of the actual chair.

The goal of the adjustments is to get the chair carriage to the smallest possible tolerances in relation to the chair guide to achieve is as little play between chair and guide as possible. This helps to keep the chair stable, but it must also be able to cope with the tolerances of the chair guide which is not completely straight. The cross section of the chair guide can vary a couple of mm.

If the chair carriage adjustment tolerances are too big, the chair will wobble and be unstable with a patient in it. It will also wear out the rollers and nylon friction plates quicker.

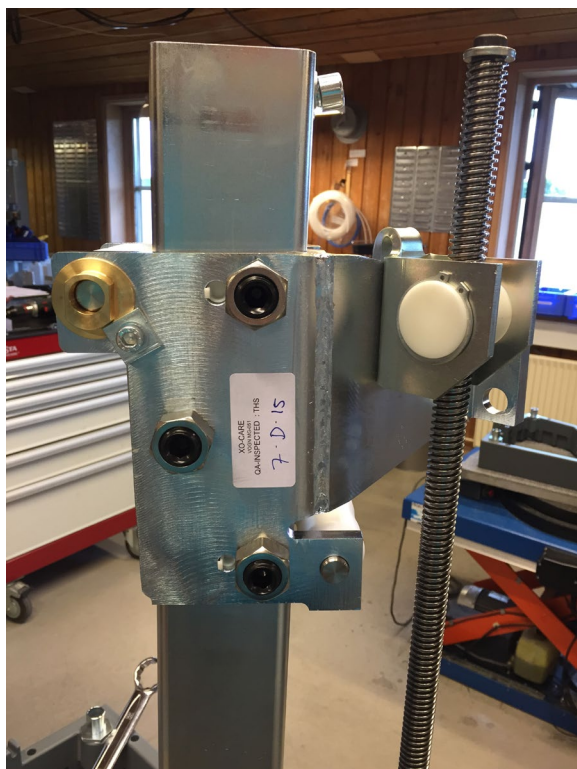
If the tolerances are too small the chair carriage can bind on the chair guide causing noises and the lifting motor to be over-worked with risk for the motor to overheat and cause a decrease in lifespan.



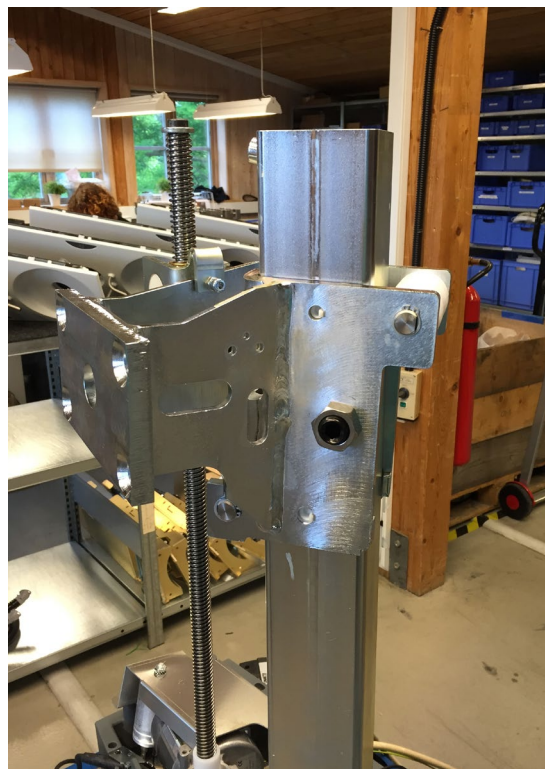
Adjustment Sequence

2 ADJUSTMENT OF THE ROLLERS

Left and right sides are as seen from the side of the chair.



Left side



Right side

- Move the chair to top position.
Loosen the 4 large M20 nuts (3 on left side, 1 on right side).
- Loosen the fixation of the eccentric brass bushing for the upper roller.
Adjust the eccentric bushing so that both rollers have contact on both sides of the chair guide. The chair carriage will move slightly while this part is adjusted.
- Tighten the screw for the eccentric bushing for the upper roller.
Check the contact patch of the rollers and guide with a 0,1mm gauge blade.

3 ADJUSTMENT OF THE M20 BOLTS

- Adjust the upper bolt on the left side until meeting resistance and unscrew the bolt by 1/12 turn (app. 30 degrees). Tighten the nut while keeping the bolt in position. The chair guide should not move, if it does then the “dummy weight” is either incorrectly positioned, or the adjustment is incorrect.
Both sides of the upper part of the carriage should have slight contact with the chair guide now.
- Adjust the lower bolt on the left side so that the opposite side (right side) is “pulled” towards the chair guide and achieves contact with the chair guide. When the bottom part of both sides of the chair carriage has contact with the chair guide, unscrew the bolt by 1/12 turn (app. 30 degrees). Tighten the nut while keeping the bolt in position.
The bottom half of the chair carriage can move a lot during this adjustment.
Both sides of the lower part of the carriage should have slight contact with the chair guide now.

PATIENT CHAIR CARRIAGE ADJUSTMENT

- Adjust the right middle bolt until meeting resistance, the bolt must only barely touch the chair guide. The chair carriage should not move during this adjustment, if it does then it has been over tightened.
- Adjust the left middle bolt until meeting resistance, the bolt must only barely touch the chair guide. The chair carriage should not move during this adjustment, if it does then it has been over tightened.
- Remove the dummy weight, move the chair guide by hand and feel if the chair guide seems too loose or too tight or reasonably stable.
- Clean the square tube and grease with (FA-385) Sunaplex 781 only the two faces where the friction plates are located. Do not grease the faces where the rollers are rolling.
- Grease the motor spindle. Use Darina R2 grease, (YR-026).



- With the dummy weight or actual chair, move the chair to the lowest and highest position while listening for abnormal noise. The noise must not be too loud, and the motor must run easily.
- Check that all four adjustment screws have contact with the chair guide and that the friction plates create 2 tracks in the grease on each side of the chair guide, see picture above. If there is only 3 or less tracks in the grease, a re-adjustment is needed.

Check that both rollers still have contact with the chair guide.

Manufacturer
XO CARE A/S
Copenhagen
Denmark



Subject to change.
Usserød Mølle
Håndværkersvinget 6
DK 2970 Hørsholm
+45 70 20 55 11
info@xo-care.com