

XO® 4 / XO® FLEX
UPGRADE OF SUCTION HOSE SYSTEM MK2
NON AUTO RETURN

YB-804
Version 1.00

XO CARE A/S
Usserød Mølle
Håndværkersvinget 6
DK 2970 Hørsholm
Denmark

+45 70 20 55 11
info@xo-care.com
www.xo-care.com



Needed tools:

1. Small Philips screwdriver
2. TORX 10 screwdriver
3. Slot-type screwdriver ≤ 2.5 mm

Kit, part no.:

- KT-070/KT-071: Kit, Upgrade to Suction Hose System, Non-Auto Return MK2

WARNING:

When making changes and handling electronics in the XO 4 Unit – always use ESD antistatic wristband (UC-600)

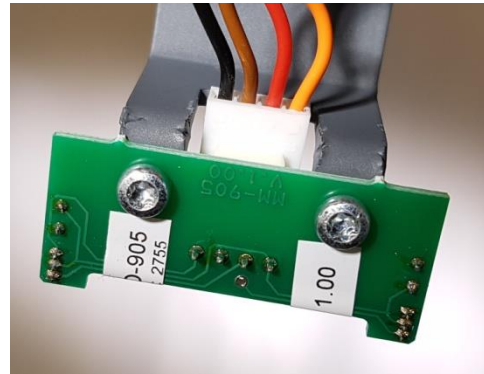


Switch the unit off

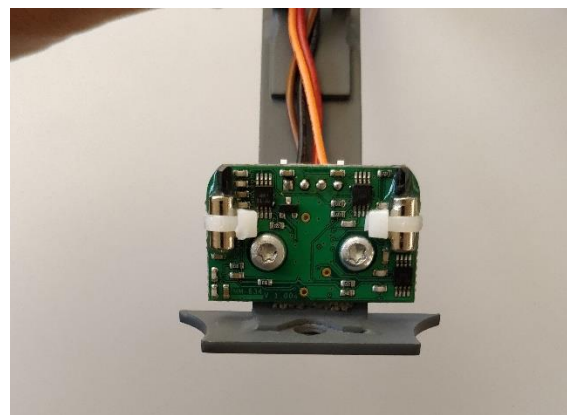
Remove the plastic part by removing the screw illustrated.



Unscrew the two M3 screws, remove the PCB and disconnect the cable.

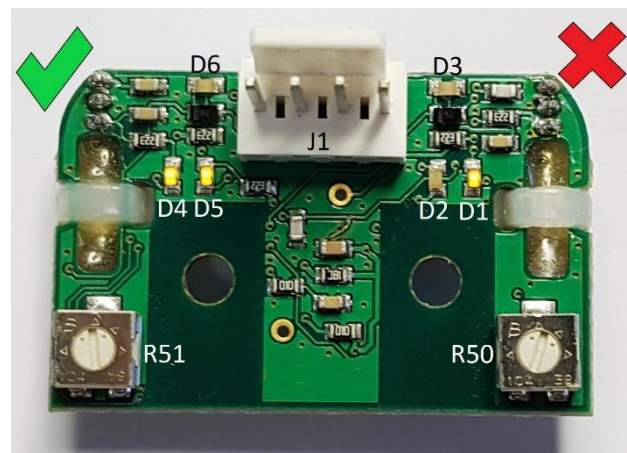


Reconnect the cable to the new PCB (AP-297 / AD-634) and fit the new PCB with the same two screws.

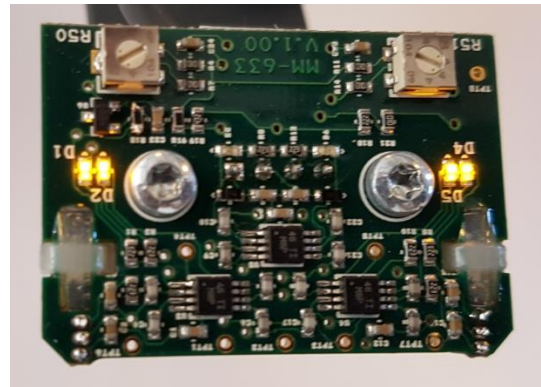


Switch the unit on

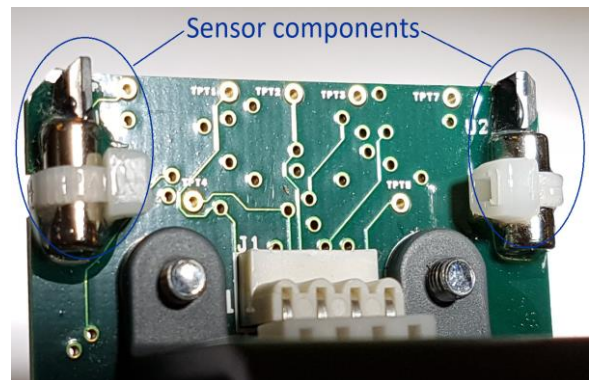
To ensure that the sensitivity of the PCB is optimal, please adjust R50 until diode D1 and D2 are equally bright. Perform the same adjustment on R51 for diode D4 and D5.



When the four LEDs are equally bright,
switch the unit off.



Refit the plastic part while taking care of
not bending the sensor components.



Check the function using the MK2
hoses.

